



# BABYLON & ONTOLOGY

The European Educational Social Network

Babylon & ONtology: Multilingual and cognitive e-Learning Management System via PDA phone.  
Funding Programme: Lifelong Learning Programme 2007 - Multilateral project - Key Activity 3 - ICT.

## INDEX

- A few words from the Project manager.....p1
- A deeper insight into BONy Social Network .....p2
- Latest news.....p3
- Next events.....p3
- Additional Information.....p3

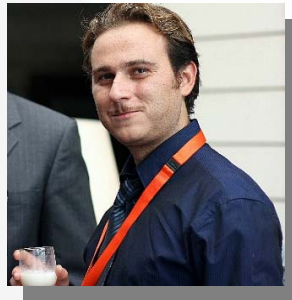
### Register to

### BONy social network:

<http://social.bonynetwork.eu>

### BONy mobile:

<http://mobile.bonynetwork.eu/>



## A few words from the Project Manager

Manuele Manente, P.M.F. S.r.l.

### Dear BONy enthusiasts,

Time flies and we have already entered the fourth and latest quarter of our project. We have already achieved a lot of hard but fruitful and enjoyable work we are sure to lead to a good end.

Last year, we organized the first pilot test of the English version of BONy course,. It was structured around a preliminary survey on users' expectations on PCM and e-learning methodology, an entry test to assess the user's knowledge on PCM, the e-learning course structured around five sections and a concluding survey on users' experiences and feeling.

A total of 130 users from 14 countries joined our BONy platform and participated to pilot test. They were University researchers, post-graduated and PhD students, researchers on ICT and education, business managers and employees, vocational training service providers and civil servants from the Italian Ministry of education.

Today, we are glad to start the second BONy beta test about:

- ✿ BONy 11-language e-course on EU project management
- ✿ BONy Project Management Wiki – useful to enrich course content with users' suggestions and notes;
- ✿ BONy cross-languages search engine – helpful to retrieve the learning objects in a language independent way;
- ✿ BONy Video-conference system – a virtual environment useful to schedule audio/video meeting up to 10 users;
- ✿ BONy Educational Social Network that will allow the users to express their skills and capability.

It is a very encouraging conclusion and we now finalize the consolidation of our BONy social network and the newly released version supported on a PDA phone.



## A deeper insight into BONy Social Network

Apart from being a cognitive e-learning Management Systems (LMS), BONy is also a new-generation **social network** whose main objective is to create a “**friend-of-a-friend**” **expert community** to exchange know-how on various topics such as European project management, learning, R&D, education, etc. Being a European network, its reach for a further integration, inter-cultural dialogue can be fully achieved and fruitful for European cooperation in research and project development.

In the latest months, the BONy consortium concentrated on the effective development and functioning of the adaptive and intuitive e-learning system able to learn and to configure itself according to its understanding and interaction with learners’ requirements, to generate random tests on the formative units required and to verify trainees’ progress. Users can now express their skills and capability for creating their own profile and access a better adapted network and BONy course on Project Cycle Management.

BONy social network offers the following sections:

- Training: allows to start learning with an interaction option amongst users, to organise their time and activities through forums, a virtual meeting room, announcement and a brand new BONy blog.
- My Profile: register, update or unsubscribe to BONy social network. (it is moved under community)
- Agenda: to manage a personal agenda adding events and displaying them.
- Progress: to review your course progresses to better plan your participation.
- Wiki: to get large information on PCM brought by the other users or for you to bring valuable contributions.
- Community: active on-line environment (or Social Network) where every body shares knowledge and benefits from the others’.
- Semantic and Multilingual Search engine useful to retrieve the required information among e-course lessons, in the suitable language.

In a few weeks, BONy platform will be translated to all languages however the Community will still be in English.

### Register to

### BONy social network:

<http://social.bonynetwork.eu>

### BONy mobile:

<http://mobile.bonynetwork.eu/>

## Register to BONy social network:

<http://social.bonynetwork.eu>

## BONy mobile:

<http://mobile.bonynetwork.eu/>

This publication only reflects the views of the author, and the European Commission cannot be held responsible for any use which can be made with the information contained herein.

## Latest News

-  BONy PCM e-course, cross-language search engine and social network are available on PDA at:  
<http://mobile.bonynetwork.eu/>
-  The 10 and 11 of October 2009 IDEC attended to the 1st e-learning Expo in Athens, where they had set up a small stand. In two days, about two hundred people visited the stand and learnt about the project.  
<http://www.elearningexpo.gr/>
-  The last transnational meeting of BONy project was held in Zielona Góra (Poland) on last June, 4<sup>th</sup> and 5<sup>th</sup> 2009.
-  **BONy social network is ready, you can register now, at:**  
<http://social.bonynetwork.eu>

## Next Events

-  The Project Coordinator has been invited to **ONLINE EDUCATION BERLIN 2009** pre-conference workshop: Learning, Innovation and ICT, as success example of "Learning Communities", at the InterContinental Hotel in Berlin. It is an excellent opportunity to present the project to both project managers and e-learning players.
-  The last **BONy conference** will be held in **Rome, Friday 11<sup>th</sup> December**, at the Institute for Cognitive Sciences and Technologies (ISTC), of the Italian National Council of Research (CNR). For further information, please check our website.

## Additional Information

Websites:

[www.bonynetwork.eu](http://www.bonynetwork.eu) (Dissemination website)

<http://social.bonynetwork.eu> (BONy interface per PC, Laptop, net-book)

<http://mobile.bonynetwork.eu> (BONy interface per smart phone and PDA)

E-mail: [info@bonynetwork.eu](mailto:info@bonynetwork.eu)